

New York

We have pre-packaged the following 2, 3 and 4 night plans that include the Features Activity Group inclusions shown below. You can always add on Extra Nights and shows and we are pleased to modify the included features. Just tell your travel agent the exact way you want it! For Sightseeing-only packages, see Simply Sights.

2 NIGHTS - Plan 2A

- Includes 2 nights hotel & tax, plus:
- One Selection from Group I

3 NIGHTS - Plan 3A

- Includes 3 nights hotel & tax, plus :
- One from Group II
- One from Group III
- One Broadway Show (or other Group V choice); Orchestra or Front-mezzanine

4 NIGHTS - Plan 4A

- Includes 4 nights hotel & tax, plus
- One from Group I
- Two from Group III
- One from Group II
- One from Group IV
- One Broadway Show (or other Group V choice); Orchestra or Front-mezzanine

Optional Roundtrip Airport Transfers, pp:
La Guardia \$36 JFK \$40 Newark \$40

2 NIGHTS - Plan 2B

- Includes 2 nights hotel & tax, plus
- One Broadway Show (or other Group V choice); Orchestra or Front-mezzanine

3 NIGHTS - Plan 3B

- Includes 3 nights hotel & tax, plus :
- Two Broadway Shows (or other Group V choice); Orchestra or Front-mezzanine

4 NIGHTS - Plan 4B

- Includes 4 nights hotel & tax, plus :
- One from Group I
- One from Group III
- Two Broadway Shows (or other Group V choice); Orchestra or Front-mezzanine

Visit www.cityscapes.com for hotel descriptions

TOP BROADWAY SHOWS

SHOWS MUST BE SELECTED AT TIME OF BOOKING

We offer every Broadway Show! Shows may close without notice. Packages include best available seating at time of booking, but are guaranteed to be **Orchestra or Front Mezzanine!** Evening or matinee performances. Nominal surcharges may apply for some shows. Please visit www.cityscapes.com for current show list. Cancelled shows are non-refundable. See Top Shows below.

HOLIDAY SEASON PACKAGES

See pages 14/15 for Holiday Season Packages for Thanksgiving Parade, Shoppers Weekends in December and New Year's Eve in Times Square.

FEATURES ACTIVITY GROUPS

GROUP I - Miscellaneous

- American Museum of Natural History
- 3-hour Sightseeing Cruise
- Sunset Harbor Lights Cruise
- Night Tour/Holiday Lights
- Lunch or Dinner at Stage Deli
- One Day Downtown Hop on/off

GROUP II - Sights

- All Loops Tour #AL – Gray Line 48-hour pass, hop-on/off all day at 40 stops at your own pace!

Group II Add-Ons

Extend the #AL Tour to include these additional features at the surcharges shown:

- Add-on #1: #ALS Tour. Includes 2 days hop-on/off PLUS boat ride to the Statue of Liberty and Ellis Island. Add \$18
- Add-on #2: Classic Tour #ENS. Includes 2 days hop-on/off plus Statue of Liberty and Ellis Island PLUS Choice of Empire State Building Observatory OR Top of the Rock Observatory at Rock-

efeller Center. Add \$42

- Add-on #3. Freestyle Tour #FSNY3. Includes 2 day hop-on/off, plus your choice of 3 sightseeing attractions from a list of 14. See cityscapes.com for details. Add \$62

GROUP III - Dinners

- Gallagher's
- Sardi's
- The View

GROUP IV - Culture

- Metropolitan Museum of Art
- Guggenheim Museum
- American Museum of Natural History
- Museum of Modern Art

GROUP V - Entertainment

- Broadway Show - Guaranteed Orchestra or Front Mezzanine seat
- Rockettes Christmas Spectacular at Radio City Music Hall (Nov. & Dec.)
- Yankees Baseball Game
Seats will be along first or third baseline.

Visit www.cityscapes.com for complete sightseeing descriptions

Simply Sights

These pre-packaged plans are based on self-guided hop-on/off tours. Ask about our fully-narrated all day Manhattan Experience tour, if this is more suitable for you.

2 NIGHTS - Plan 2S

- Includes 2 nights hotel & tax, plus:
- Gray Line Two Day Hop-on/off Pass #AL (See Group II at left for description and upgrade surcharges.)

3 NIGHTS - Plan 3S

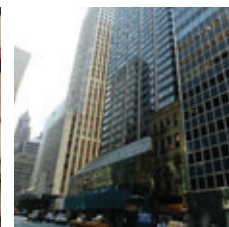
- Includes 3 nights hotel & tax, plus:
- Gray Line Two Day Hop-on/off Pass #ALS
- Boat ride to the Statue of Liberty and Ellis Island

4 NIGHTS - Plan 4S

- Includes 4 nights hotel & tax, plus:
- Gray Line Three Day Hop-on/off Pass #NYFS3
- Choose 3 activities after arrival in NYC (see our website for details - www.cityscapes.com).



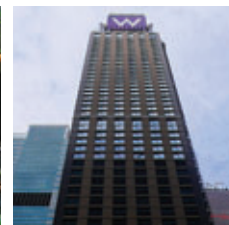
WELLINGTON



WESTIN GRAND CENTRAL



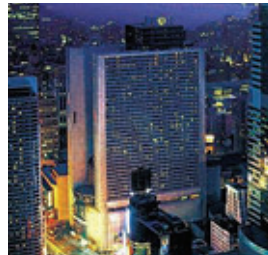
SHERATON NEW YORK



W HOTEL TIMES SQUARE



COURTYARD BY MARRIOTT



MARRIOTT MARQUIS

RATES PER PERSON HOTEL	DATES and SEASON CODE	2 NTS - 2A or 2S			2 NTS - 2B			3 NTS - 3A or B			3 NTS - 3S			4 NTS - 4A or B			4 NTS - 4S			EXT. NTS		
		SGL	DBL	TPL	SGL	DBL	TPL	SGL	DBL	TPL	SGL	DBL	TPL	SGL	DBL	TPL	SGL	DBL	TPL	SGL	DBL	TPL
COURTYARD BY MARRIOTT* BLOOMINGDALE'S	1/2-3/31, 7/1-9/2, 12/16-12/28 L	\$855	499	415	1035	679	595	1705	1169	1039	1265	729	599	2255	1539	1365	1675	959	785	354	177	132
	4/1-6/30 M	945	555	459	1125	735	639	1835	1245	1099	1395	805	659	2425	1635	1439	1845	1055	859	394	197	147
	9/3-12/15 H	1279	729	575	1459	909	755	2319	1495	1265	1879	1055	825	3059	1959	1655	2479	1379	1075	546	273	196
COURTYARD BY MARRIOTT* 5TH AVENUE	1/2-3/31, 7/1-9/2, 12/16-12/28 L	875	519	435	1055	699	615	1725	1189	1059	1285	749	619	2275	1559	1385	1695	979	805	358	179	134
	4/1-6/30 M	965	575	479	1145	755	659	1855	1265	1119	1415	825	679	2445	1655	1459	1865	1075	879	398	199	149
	9/3-12/15 H	1299	749	595	1479	929	775	2339	1515	1285	1899	1075	845	3079	1979	1675	2499	1399	1095	550	275	198
MARRIOTT MARQUIS	1/2-3/31, 7/1-9/2, 12/19-12/28 L	985	585	489	1165	765	669	1885	1285	1135	1445	845	695	2479	1675	1479	1899	1095	899	416	208	154
	4/1-6/30 M	1155	665	535	1335	845	715	2125	1395	1205	1685	955	765	2795	1825	1575	2215	1245	995	478	239	178
	9/3-12/15 H	1395	795	625	1575	975	805	2499	1595	1335	2059	1155	895	3299	2095	1745	2725	1515	1165	616	308	220
SHERATON NEW YORK	1/2-3/31, 7/1-9/2, 12/19-12/28 L	985	585	489	1165	765	669	1885	1285	1135	1445	845	695	2479	1675	1479	1899	1095	899	416	208	154
	4/1-6/30 M	1185	685	555	1365	865	735	2165	1419	1229	1725	979	789	2845	1855	1599	2265	1275	1019	488	244	182
	9/3-12/18 H	1325	769	609	1505	949	789	2375	1539	1299	1935	1099	859	3125	1999	1689	2545	1429	1109	560	280	199
W HOTEL TIMES SQUARE	1/2-3/31, 7/1-9/2, 12/19-12/28 L	1315	759	599	1495	939	779	2365	1529	1295	1925	1089	855	3115	1999	1695	2535	1419	1115	560	280	206
	4/1-6/30 & 9/3-12/18 H	1455	829	665	1635	999	845	2579	1635	1385	2139	1195	945	3395	2145	1799	2825	1565	1225	634	317	230
WELLINGTON	1/2-3/14 L	759	455	NA	929	625	NA	1535	1075	NA	1125	665	NA	2089	1469	NA	1489	875	NA	314	157	NA
	Balance of Year	For the balance of the year, rates are on request																				
WESTIN GRAND CENTRAL	1/2-3/31, 7/1-9/2, 12/19-12/28 L	1145	645	535	1325	825	715	2079	1359	1199	1639	919	759	2715	1775	1559	2135	1195	979	446	223	172
	4/1-6/30 M	1219	715	585	1399	895	765	2229	1465	1269	1789	1025	829	2939	1915	1655	2359	1335	1075	518	259	194
	9/3-12/18 H	1415	815	645	1595	995	825	2529	1615	1359	2089	1175	919	3345	2115	1775	2765	1535	1195	622	311	224

Season Codes: H=High, M=Mid, L=Low Children under 18 are free in same room with parents at: Courtyards, Marriott, Sheraton, "W" Hotel, Westin; Wellington does not have a Family Plan. Children's features rates available on request. Rate surcharges will apply over Special Event periods, including the United Nations General Assembly in late September, NYC Marathon in early November, and Holiday Season: See pages 14/15 for Thanksgiving, Shopper's Weekends in early December and New Year's Eve packages. *Two Courtyards to choose from: Fifth Ave at 40th Street OR 3rd Ave at 52nd Street (Bloomingdale's area).

WEEKEND SPECIALS APPLY AT MOST HOTELS. HAVE YOUR TRAVEL AGENT ASK US ABOUT REDUCED RATES FOR STAYS ON FRIDAYS & SATURDAYS

IMPORTANT INFORMATION

- **CHILDREN RATES** - Children under 18 are free in room with parents in existing beds at all hotels except the Wellington. Children's Features Rates will be quoted at time of booking.
- **HOLIDAY SEASON** - Thanksgiving to December 31 is New York's busiest time. New York is aglow with the sights and sounds of the Holiday Season. Our packages are available over this period, but space is limited and Holiday Season surcharges apply. Prices and availability will be quoted at time of booking. See pages 14/15 for Holiday Season Packages.
- **HOTEL CHECK-IN/CHECK-OUT** - Generally check-in is no earlier than 3:00pm and check-out by 12 noon. This is the policy of the hotels, not City Escape Holidays and may differ from hotel to hotel.
- **FEATURES ACTIVITY SELECTIONS** - Selections from our multiple choice

vouchers may be made after arrival, with the exception of shows and optional add-ons, which must be selected at time of booking.

- **BROADWAY SHOW POLICIES** - Deposits on Broadway Show packages are due within 7 days of booking and will generally be based on the number of show tickets x \$200 (may vary). **SHOW CANCELLATIONS ARE ABSOLUTELY NON-REFUNDABLE**; these are the policies of the theaters, not City Escapes.
- **EXTRA FEATURES** - Any item listed in the Features Activity Groups can be purchased as Add-ons. Prices quoted at time of booking.
- **GROUP PACKAGES** - Your travel agent can book your group or organization on any of our packages. We can plan group activity functions, or prepare independent documents, so that each group member (or couple) can "do their own thing" after arrival; great for pre/post-cruise groups.
- **ROOM ALLOCATIONS** - When City Escape Holiday's room allocations are sold out, often we secure additional rooms, but they may be at a higher rate,

based on the hotel's capacity pricing policy. If this is the case, we will advise your travel agent at time of booking. Rates for suite accommodations are available on request at all hotels.

- **ROLLAWAYS** - Cost for rollaways is not included in package rates. We suggest customers take care of this with the hotel directly.
- **SIGHTSEEING WITH GRAY LINE** - See www.cityescapes.com for descriptions of all sightseeing tours. All tours can be purchased as optional add-ons if not included in your package.

Yankees Baseball

See your favorite team play the Yankees in their new stadium. Chose as a Group V inclusion.



TOP TWELVE BROADWAY SHOWS

